



## XBAR - Standard Vacuum Packages



SIHI Pumps  
[www.sihi-pumps.com](http://www.sihi-pumps.com)





# SIHI XBAR Standard Solutions

## SIHI PERFORMANCE & RELIABILITY

### Single Source Responsibility

One purchase order, One contact and One warranty.

### Package Design Flexibility:

The XBAR package allows **once through** or **partial recirculation** of the service liquid, if required.

### Availability:

Standard design provides immediate availability of documentation for your engineering evaluation, and **rapid delivery** often from stock.

### Save Valuable Floor Space:

Space requirements are minimized by **compact design**.

### Ready for Installation:

**Reduce** your **installation costs** & **procurement costs**. Buy the XBAR package and receive the same quality and testing as you have always known in SIHI liquid ring vacuum pumps.

### Safe Cool Operation:

The **safest compression of thermally sensitive, hazardous or explosive process gases** is ensured by the cool compression provided by liquid ring pumps.

### Accepts Entrained Liquid and Vapor:

SIHI vacuum pumps in XBAR packages **handle carryover or condensable vapors** from your process.

### Low Maintenance and Long Life:

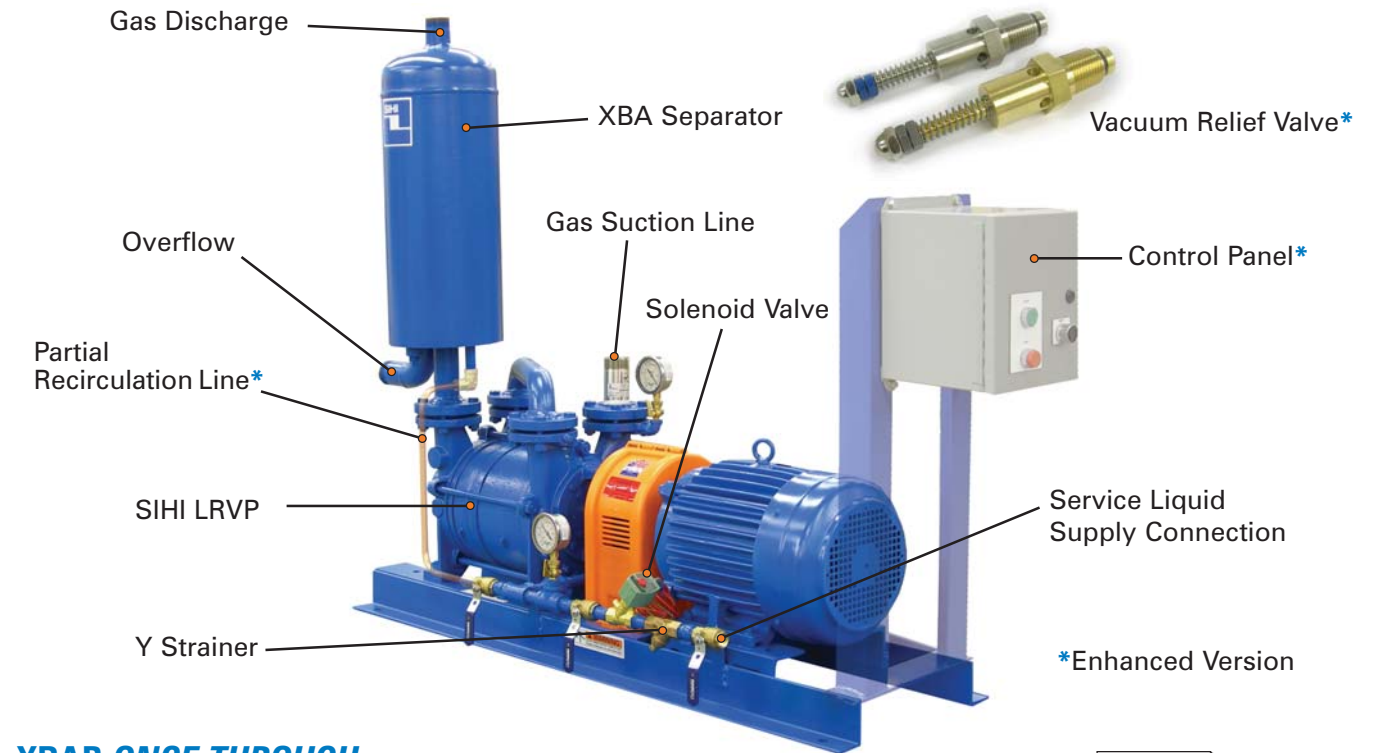
XBAR packages are simple and do not require special tooling to disassemble. The vacuum pumps **have one moving part with no metal to metal contact**. The result is **cost savings** over the entire package life.

### Low Vibration & Noise:

Absence of reciprocating parts assures **quiet and low vibration operation** - eliminating the need for special foundations.

# XBAR

## The XBAR PACKAGE

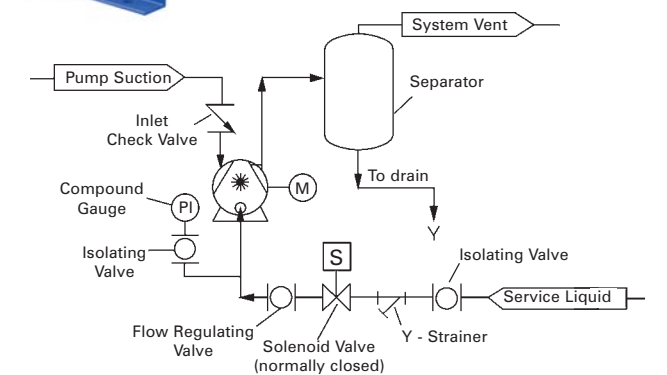


### XBAR ONCE THROUGH SERVICE LIQUID ARRANGEMENT

Used where service liquid is plentiful and contamination is not a problem.

#### Benefits

- Simplicity
- Lowest initial cost

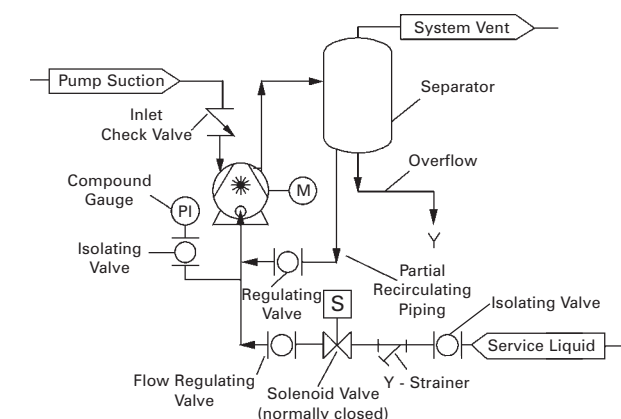


### XBAR PARTIAL RECIRCULATION SERVICE LIQUID ARRANGEMENT

Used where service liquid is available and contamination problems are minimal.

#### Benefits

- Simplicity
- Low initial cost
- Reduced service liquid consumption



## Dry Air Performance of SIHI Medium Vacuum Units

Package Model	Pump Model	Speed RPM	Motor HP	Vacuum (in Hg.)					Avg. XBAR Service Liquid Flow USGPM	Suction / Discharge Size (in.)	XBAR Shipping weight (lbs.)
				12	16	20	24	26			
				ACFM	ACFM	ACFM	ACFM	ACFM			
XBAR 15	LEMR 15	3500	3/4	7.1	7.2	7	6.3	5.4	0.75	1 / ¼	124
XBAR 20	LEMR 20	3500	1	13.5	13.5	13.4	11.3	8.2	1.0	1 / ¼	129
XBAR 40	LEMR 40	3500	2	24	24	23	20.5	16.5	1.5	1¼ / 1½	154
XBAR 60	LEMR 60	3500	3	37	37	37	35	30.5	1.5	1¼ / 1½	180
XBAR 110	LEMR 110	1750	5	76	76	76	74	63	3.0	1½	264
XBAR 170	LEMR 170	1750	7.5	109	114	117	113	104	3.8	1½	319
XBAR 250	LEMR 250	1750	10	151	152	154	150	138	4.4	2	494
XBAR 20103	LPH 20103	3500	2	14.8	14.7	13.8	11.3	-	1.2	1¼	219
XBAR 20105	LPH 20105	3500	2	29	29.5	28	22	-	1.2	1¼	220
XBAR 20107	LPH 20107	3500	3	33.5	34	31.7	23	-	1.2	1¼	272
XBAR 3404	LPH 3404	1750	3	40	40	40	32	-	3.4	1½	397
XBAR 3408	LPH 3408	1750	5	75	75	74	65	-	3.4	1½	414
XBAR 40412	LPH 40412	1750	7.5	118	118	117	102	60	2.5	1½/2	453
XBAR 40517	LPH 40517	1750	10	167	167	163	147	105	6.0	2	528
XBAR 50518	LPH 50518	1750	15	250	248	240	217	184	7.8	2½	824
XBAR 50523	LPH 50523	1750	20	330	327	318	288	250	6.5	2½	918
XBAR 60520	LPH 60520	1750	25	365	362	352	322	270	6.4	4	1218
XBAR 60527	LPH 60527	1750	40	470	470	456	415	350	7.5	4	1478
XBAR 70123	LPH 70123	1150	40	600	600	580	485	380	9.3	4	2490
XBAR 70530	LPH 70530	1150	60	812	795	760	685	545	15	5	2894
XBAR 70540	LPH 70540	1150	75	1120	1120	1095	1000	825	17	5	3089

- Capacity in ACFM at inlet pressure at sea level for dry air at 20°C (68°F) using 15°C (59°F) water as service liquid, with atmospheric discharge pressure.
- Service liquid flow rate based on Once through Service Liquid Arrangement.
- All dimensions and weights are approximate.
- XBAR Shipping Weight (lbs.) reflects the shipping weight if all optional modules are selected.
- Data is subject to change without notice.

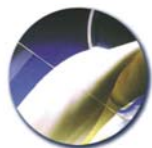
### APPLICATIONS



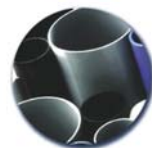
**Chemical**



**Pharmaceutical**



**Food & Beverage**



**Plastics**



**Electronics**

**And many more!**

## Dry Air Performance of SIHI High Vacuum Units

Package Model	Pump Model	Speed RPM	Motor HP	Vacuum (in Hg.)				Avg. XBAR Service Liquid Flow USGPM	Suction / Discharge Size (in.)	XBAR Shipping weight (lbs.)
				20	25	28	28.9			
				ACFM	ACFM	ACFM	ACFM			
XBAR 15	LEMR 15	3500	3/4	7	5.8	4	-	0.75	1 / 3/4	124
XBAR 20	LEMR 20	3500	1	13.4	10.1	4	-	1.0	1 / 3/4	129
XBAR 40	LEMR 40	3500	2	23	18.5	8	-	1.5	1 1/4 / 1 1/2	154
XBAR 60	LEMR 60	3500	3	37	32.3	23	8	1.5	1 1/4 / 1 1/2	180
XBAR 110	LEMR 110	1750	5	76	72.1	52	35	3.0	1 1/2	264
XBAR 170	LEMR 170	1750	7.5	117	110	74	46	3.8	1 1/2	319
XBAR 250	LEMR 250	1750	10	154	145	110	80	4.4	2	494
XBAR 25003	LPH 25003	3500	2	14.9	14.5	11	-	1.4	1 1/4	223
XBAR 25007	LPH 25007	3500	3	31	31	23	-	1.4	1 1/4	291
XBAR 3704	LPH 3704	1750	5	36.5	42	28.5	17	4.4	1 1/2	436
XBAR 3708	LPH 3708	1750	7.5	70	74	55	30	5.5	1 1/2	498
XBAR 45312	LPH 45312	1750	7.5	102	112	95	61	3.5	1 1/2	519
XBAR 45317	LPH 45317	1750	10	150	150	125	73	3.8	1 1/2	575
XBAR 55312	LPH 55312	1750	20	177	199	173	117	10.5	2	890
XBAR 55316	LPH 55316	1750	20	228	248	210	122	11	2	908
XBAR 55320	LPH 55320	1750	25	247	315	265	148	13	2	1025
XBAR 65320	LPH 65320	1750	30	330	345	305	210	9.0	2 1/2	1392
XBAR 65327	LPH 65327	1750	40	385	410	360	210	9.0	2 1/2	1594
XBAR 75320	LPH 75320	1150	60	515	570	490	340	20	4/6	2854
XBAR 75330	LPH 75330	1150	75	745	830	665	400	21	4/6	3139
XBAR 75340	LPH 75340	1150	100	890	995	890	525	22	4/6	3737

- Capacity in ACFM at inlet pressure at sea level for dry air at 20°C (68°F) using 15°C (59°F) water as service liquid, with atmospheric discharge pressure.
- Service liquid flow rate based on Once through Service Liquid Arrangement.
- All dimensions and weights are approximate.
- XBAR Shipping Weight (lbs.) reflects the shipping weight if all optional modules are selected.
- Data is subject to change without notice.
- If requirements are in the range from atmospheric pressure to 20" Hg. Vac., a more efficient selection can be made from models listed on the preceding page.

## **XBAR - Standard Vacuum Packages**

**SIHI Pumps, Inc.**  
303 Industrial Drive  
Grand Island, NY 14072  
Telephone: (716) 773-6450  
Fax: (716) 773-2330

**SIHI Pumps, Inc.**  
5757 Genoa-Red Bluff Road  
Pasadena, TX 77507-1044  
Telephone: (281) 991-3100  
Fax: (281) 991-3101

**SIHI Pumps Limited**  
225 Speedvale Avenue W.  
Guelph, ON Canada N1H 6L8  
Telephone: (519) 824-4600  
Fax: (519) 824-7250



[www.sihi-pumps.com](http://www.sihi-pumps.com)